

Unit 4, TRAX Industrial Estate,  
37 Holmethorpe Avenue,  
Redhill, Surrey, RH1 2NB  
Phone: 01737 770 970  
Email: [info@gutterworks.co.uk](mailto:info@gutterworks.co.uk)



## Clinic (West Sussex)

### FABRICATION AND INSTALLATION OF BESPOKE POLYESTER POWDER COATED ALUMINIUM SKYLINE & PIPE ANTI-CLIMB SYSTEMS

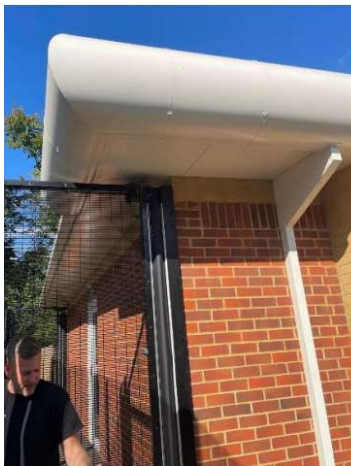
Secure units have a requirement to protect their clients and the wider public from harm. As such building security is paramount and as such, we are often tasked with the installation of Anti-climb systems.

When a need is identified we are contacted by a larger Contractor, Health Service provider, Education service or the Manufacturer to assess the scale & scope of the project.

The aluminium systems are by far the most efficient in terms of design requirements, aesthetics and client safety, allowing for a flexible and efficient installation.

This is important in the respect of enabling installation whilst the buildings are occupied, to complete the works with reduced disruption and minimise stress on Staff and their charges.

On this project, Gutterworks, worked closely with the Clinic, Main Contractor and Alumasc Water Management Services (AWMS's) technicians from their Skyline Division, to deliver materials to the required specification, to upgrade & enhance the existing systems.



The works involved numerous design, production and safety meetings to ensure good communications, using skilled and vetted workman to enable a superb, finished product.

